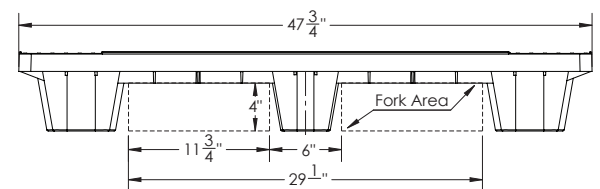
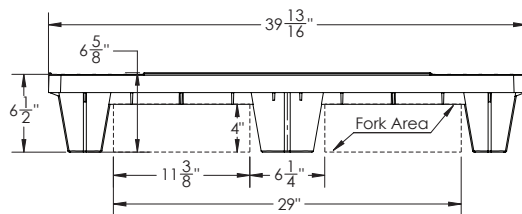
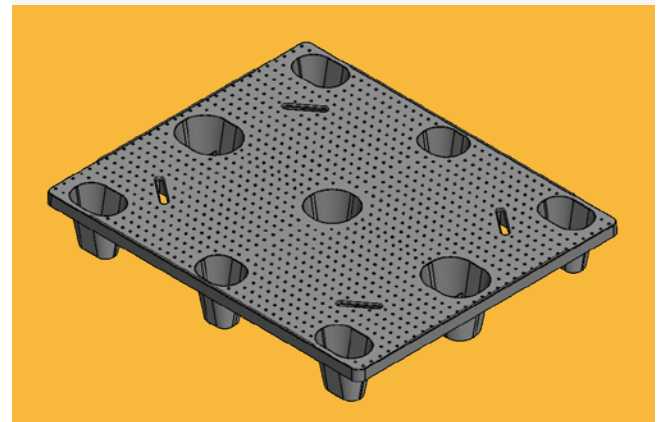


### Features & Benefits

- ◆ Injection-fed compression molding technology, utilizing compatibilized materials, delivering superior durability, impact resistance, and optimized performance.
- ◆ A superior strength-to-weight ratio ensures maximum carrying capacity and enhanced rigidity for heavier loads.
- ◆ Designed with an optimal footprint and 4-way entry, ensuring efficient trailer loading and full versatility in the warehouse and during delivery.
- ◆ Engineered for safety, with a lightweight design and ergonomic handles helping prevent injuries and promote secure handling.
- ◆ Designed to be highly nestable, maximizing productivity and conserving space when empty—whether in the warehouse, at stores, or during backhails.
- ◆ Sustainable production utilizing 100% Green Circle Certified recycled plastic made from post-consumer materials. It is fully recyclable at the end of its life, enabling reuse and contributing to the Circular Plastic Economy.
- ◆ The molded-in top deck texture enhances the coefficient of friction (COF), helping to prevent product slippage.

### Options

- ◆ Available in black only.
- ◆ Hot-stamped logos are available in various color options for customer-specific branding and can be applied on all four sides.
- ◆ RFID capability.
- ◆ Rubber grommets on the bottom legs are available to minimize pallet movement in trailers during transit.
- ◆ Exclusive buy-back recycling program provides exceptional value at the end of the product life cycle, promoting sustainability and supporting the Circular Plastic Economy.



### Specifications and Capacities

Length = 48"

Width = 40"

Height = 6.5"

Fork Clearance = 4"

Dynamic load rating = 3,000 lbs.

Static load rating = 10,000 lbs.

Trailer QTY = 1,200

Weight = 28 lbs.